



PROJECT

TYPE

DATE

ITEM NO.

NOTE

LED Slim High Performance Area / Flood Luminaire

ALBE Series

Area Luminaires

DESCRIPTION

The ALBE Series LED Area Luminaire is a high-performance, IP68-rated luminaire that produces a minimum of 125 lumens per watt, providing significant energy savings while remaining durable in the field. The lightweight design can be easily installed to new and retrofit outdoor applications, and is available in a wide range of lumen packages to replace traditional metal halide lighting from 150W to 1000W. It can also be combined with a full, architectural-grade LED luminaire to create a wide range of total site solution.

APPLICATION

The ALBE Series is ideal for parking structures, auto dealerships, recreational spaces, roadways, and outdoor aisles.



SPECIFICATION FEATURES

Construction

The housing is die-cast A383 aluminum weather-tight LED driver compartment +6063 aluminum heat sink to obtain the maximum thermal dissipation. Outer surface treated with durable powder coating to provide resistance to corrosion, rust, weathering, and UV degradation. 19" 18/3 SJTW cord included standard. Rated IP68, suitable for wet locations. 4KV surge protection and shorting cap comes standard.

Mounting

Patent Slide in mounting offer simple quick installation. Versatile platform offers different mounting options, including adjustable slip fitter, round pole mount for 4"-6" pole, square pole mount for 3"x3" or larger pole, and adjustable trunnion U-bracket. Different mounting options could address area, flood, and wall pack applications.

Controls

Suitable for use with photocell and High/Low/Off microwave fixture-integrated motion sensor to achieve deeper energy-savings and code compliance.

Electrical

Luminaire utilizes long life, high efficacy LEDs and reliable LED driver. Operating temperatures is -40°F-113°F and 120-277V input voltage for increased versatility.

Optics

Precision-formed optical lens system reduces glare and improves safety and security by delivering high efficiency illumination with precise optical distribution. Type III distribution comes standard. Type II, Type IV, and Type V optics available upon request.

Certifications / Regulatory

UL/cUL listed. All components used have UL approval. IP68 rated.

Warranty

7-year limited warranty. See complete warranty terms for details.

Quick Ship Product

ALBE-75/30K
ALBE-75/50K
ALBE-150/30K
ALBE-220/30K
ALBE-220/40K
ALBE-220/50K
ALBE-300/30K
ALBE-300/40K
ALBE-300/50K
ALBE-400/50K

ORDERING INFORMATION

Sample Number: ALBE-150/50K

Series	Lumen Package					
ALBE - LED Slim High Performance Area / Flood Luminaire	75 - 75W, 9750lm	150 - 150W, 19500lm	220 - 220W, 28600lm	300 - 300W, 39000lm	400 - 400W, 50000lm	480 - 480W, 60000lm

CCT	Distribution	Finish Color	Input Voltage	Mounting Option	Control Option
30K - 3000K	(Blank) - Type III	(Blank) - Dark Bronze	(Blank) - 120-277V	MASF - Adjustable Slip-fitter	PC - Photocell
40K - 4000K	T2 - Type II	WH - White	C - 120-347V	MRPM - Round Pole Mount for 4" to 6"	SC - Shorting cap (Included)
50K - 5000K	T4 - Type IV	BK - Black	480 - 480V	MSPM - Square Pole Mount for 3"x3" or longer	OS - Step dimming PIR motion sensor and daylight sensor. (Only available with MRPM & MSPM mounting; requires RC101 Sensor Configuration Tool. Not included)
	T5 - Type V	SLV - Silver		MAUB - Adjustable Trunnion U-bracket (75-300W only)	
	7H6V - 90°x120° Flood lens (400-480W only)			MUB - U-bracket (400-480W only)	

SUMMARY

Input Voltage	100-277V
Input Power	See energy data for details
Power Factor	> 0.95
THD (Max.)	20%
Efficacy	> 125 LPW
Delivered Lumens	See energy data for details
Controls/ Dimming	0-10V dimming option available.
CRI	> 70
CCT	3000K, 4000K, 5000K
Operating Temp.	-40°F ~ 113°F (-40°C ~ +45°C)
Rated Life	70,000 hours
IP Grade	IP68

ENERGY PERFORMANCE DATA

Part No.	Rated Wattage (W)	Delivered Lumens (lm)	Efficacy (lm/W)
ALBE-75	75	9,750	125
ALBE-150	150	19,500	125
ALBE-220	220	28,600	125
ALBE-300	300	39,000	125
ALBE-400	400	50,000	125
ALBE-480	480	60,000	125

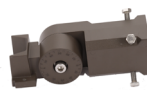
MOUNTING INFORMATION

Adjustable
Slip-fitter

Round Pole
Mount

Square Pole
Mount

Adjustable Trunion
U-bracket

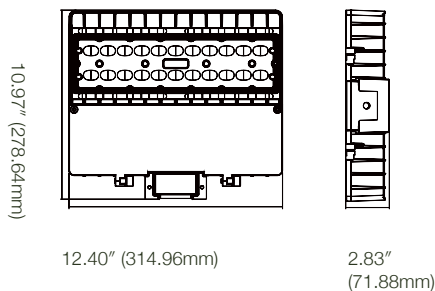


PHYSICAL PARAMETERS

DIMENSION

ALBE-75

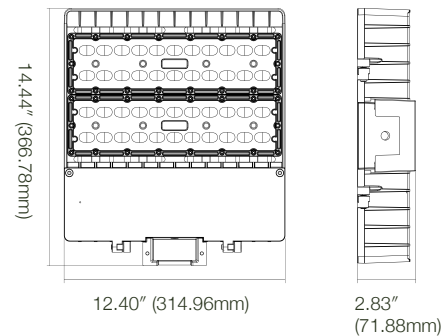
12.35 Lbs



ALBE-150 and 200

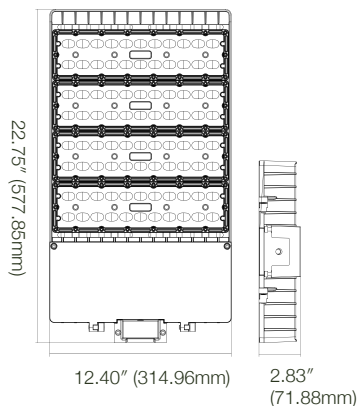
ALBE-150: 15.43 Lbs

ALBE-200: 18.08 Lbs



ALBE-300

22.27 Lbs



ALBE-400 and 480

28.11 Lbs

