

PROJECT NAME

CATALOG NO.

TYPE

DATE

NOTE

LOW VOLTAGE EXTERNAL PHOTO/MICROWAVE MOTION SENSOR

MPS06 Series
Photo/Microwave Sensor

DESCRIPTION

The MPS06 is a photo/microwave motion sensor that dims lighting from high to low based on movement. This slim, low-profile sensor is designed for installation inside the bottom of a light fixture body. The sensors use microwave sensing technology that reacts to changes in movement within the coverage area. Once the sensor stops detecting movement and the time delay elapses lights will go from high to low mode and eventually to an OFF position if it is desired. Sensors must directly "see" motion of a person or moving object to detect them, so careful consideration must be given to sensor luminaire placement and lens selection. Avoid placing the sensor where obstructions may block the sensor's line of sight.



RC-RM01

SPECIFICATION FEATURES

Benefits

- 5 modes, 10%-100% dimming level, 30"-30' delay time selectable allowed to customize your setting.
- 0-10V Bi-level dimming control
- Daylight Harvesting function
- Operates on 12V DC
- Detection area, time delay and daylight threshold can be precisely set via remote control RC-RM01.
- Wide detection area, range up to 50 ft in diameter and mounting height 40 ft Max. Suitable for warehouse use.
- 3.5mm audio plug-in interface for installation easy to be fixed with high bay.



Max. 8m



Mounting Height
12m Max.



Daylight
Sensor



Hold Time
30s-30min



Automatic
Dimming



5 Years
Guarantee



Daylight
Harvesting

WARNING

NOTE: Warm up time is 15seconds. After the sensor connects input power first time, the light will keep on 15seconds, then go to dimming to work normally.

NOTE: Factory Default Setting: 100% sensitivity, Hold on time: 10min, Daylight sensor is disabled, Dimming level: 50%, Dimming time: 5minutes.

NOTE: Any setting changed by remote control, the led light that sensor connect will on/off as confirm.

ORDERING INFORMATION

Available with the following Alphalite products: (3.5mm audio jack sensor base has pre-installed)

HEBS Series



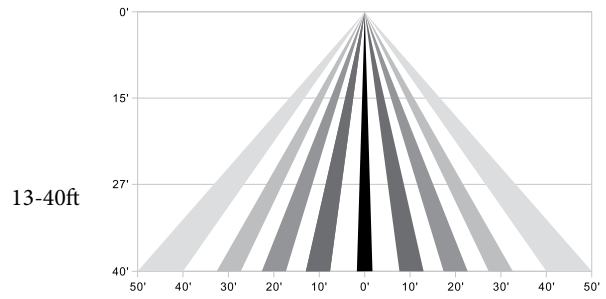
RHXS Series



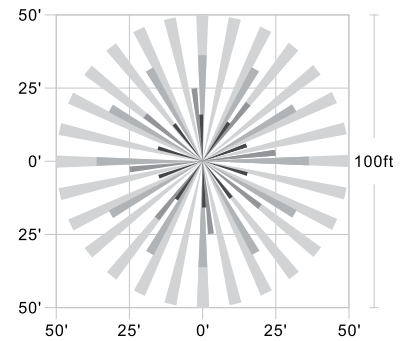
SUMMARY

Input Voltage	12V DC
Power Consumption	0.1W
Dimming	0-10V
Mounting Height	40ft Max.
Detection Range	100ft Max.
OP. Temperature	-30°F - +131°F (-30°C~+55°C)
Time Setting	10s/1min/5min/10min/30min
Mode Setting	A, B, C, D, E
Dimming Level Setting	10%, 20%, 30%, 50%, 60%, 70%, 80%, 100%
Warranty	Five year warranty
IP Rating	IP65

SENSOR COVERAGE



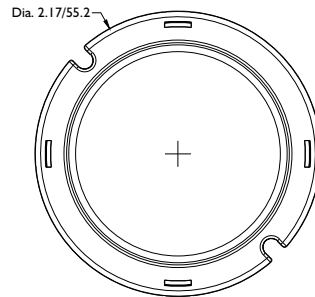
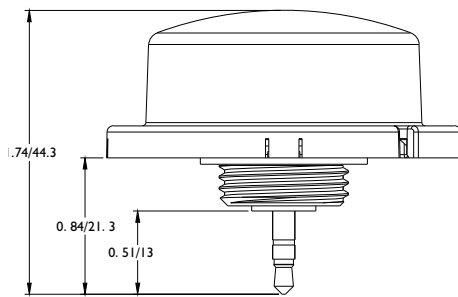
Height of installation 13-40ft



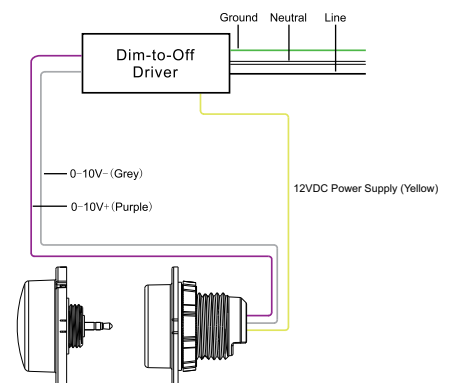
PHYSICAL PARAMETERS

DIMENSION

Unit:inch/mm



WIRING



Control Modes

TIME: 30s / 1min / 5min / 10min / 30min

DIM: 10%-100%

MODE: A, B, C, D, E

FACTORY SETTING: TIME-10min, DIM-50%, MODE-C

This sensor controlled and programed by a remote controller. When you are setting the Mode, Dimming level and Delay time, each time you press the button, the light will blink twice to indicate the setup succeeded. The sensor will not respond during blink. The sensor has 5 selectable modes, each of which has preset parameter settings. Once the mode is selected, you have the ability to further customize the Dim level and Delay time settings.

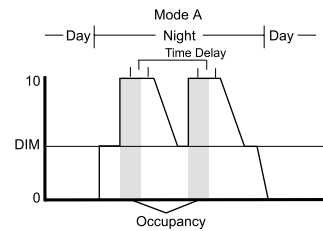
TESTING

To verify sensor control function normal, please proceed with the instruction as below to conduct test:

1. Push "Test" button on remote controller.
2. The light will turn to full-ON while occupancy detected
3. The light will dim to DIM level after 5s.
4. The light will turn OFF if no occupancy detected within another 3s.

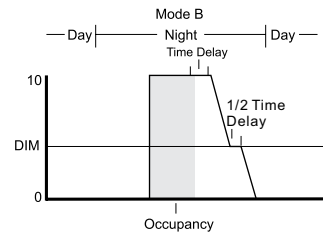
Mode A

1. Turn OFF the light while ambient light > 100 LUX
2. Turn the light to DIM level while ambient light < 100 LUX
3. Dim the light to full-ON while occupancy detected.
4. Dim the light to DIM level after the delay time elapsed.



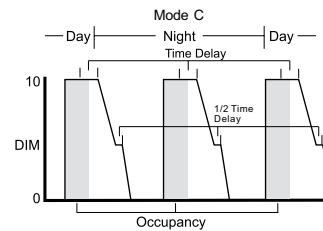
Mode B

1. Turn OFF the light while ambient light > 100 LUX
2. Turn the light to full-ON while ambient light < 100 LUX and occupancy detected.
3. Dim the light to DIM level after the delay time elapsed.
4. Turn OFF the light if no occupancy detected within another 1/2 TIME.



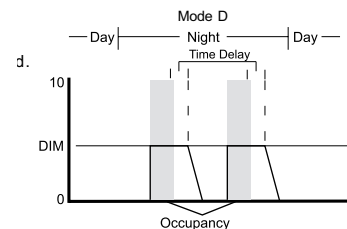
Mode C

1. Ambient light sensor is disabled.
2. Turn the light to full-ON while occupancy detected.
3. Dim the light to DIM level after the delay time elapsed.
4. Turn OFF the light if no occupancy detected within another 1/2 TIME.



Mode D

1. Turn OFF the light while ambient light > 100 LUX
2. Turn the light to full-ON while ambient light < 100 LUX and occupancy detected.
3. Turn OFF the light after the delay time elapsed.



Mode E

NOTE: This mode allows visual adjustment to choose the desired dimming level.

1. If Time is set at maximum, the light turns ON at DIM level
2. If Time is set at minimum, the light turns OFF.