



PROJECT

TYPE

DATE

ITEM NO.

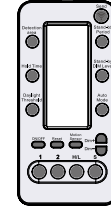
NOTE

DETACHABLE BI-LEVEL MICROWAVE SENSOR

DMMS-103S Series
Bi-level Microwave Sensor

DESCRIPTION

The DMMS-103S is a motion sensor with a unique split design, that dims lighting from high to low based on movement. The sensors use microwave sensing technology that reacts to changes in movement within the coverage area. Once the sensor stops detecting movement and the time delay elapses lights will go from high to low mode and eventually to an OFF position if it is desired. Sensors must directly "see" motion of a person or moving object to detect them, so careful consideration must be given to sensor luminaire placement and lens selection. Avoid placing the sensor where obstructions may block the sensor's line of sight.



RC-MH12

SPECIFICATION FEATURES

Benefits

- Automatic dimming when used in combination with 0-10V or 1-10V dimmable LED drivers or ballasts.
- Built-in daylight sensor.
- Detection area, time delay and daylight threshold can be precisely set via remote control RC-MH12.
- Wide detection area, range up to 40 ft in diameter and mounting height 20 ft Max.
- Pluggable design between motion detector and power part, easy to reinstall or maintain.



Max. 6m



Mounting Height
6m Max.



Daylight
Sensor



Hold Time
5S-30min



Automatic
Dimming



5 Years
Guarantee

WARNING

NOTE: Only while the Stand-by period set to "+ ∞" infinity, the light will enter the preset Stand-by dim level after the power is cycled, and run the latest setting mode; In other states, the light will remain fully on for 5 seconds after the power is cycled, and then turn off the light automatically, it will keep off if no motion is detected and run the latest setting mode.

NOTE: Factory Default Setting: 100% sensitivity, Hold on time: 5S, Daylight sensor is disable ☼, Dimming level: 10%, Dimming time: 0S.

ORDERING INFORMATION

Available with the following Alphalite products:

ILL Series



RXL Series



LVT Series



CBW Series



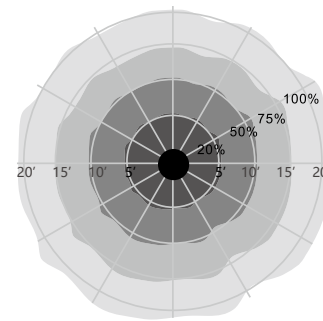
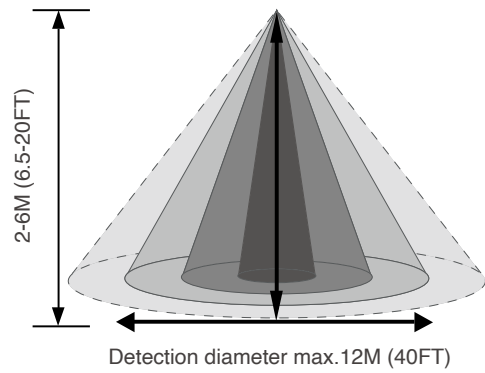
LTS Series



SUMMARY

Power Supply	120-277Vac
Dim Control Output	0-10V, Max. 20mA sinking current
HF System	5.8GHz+75MHz
Transmission Power	<0.5mW
Detection Radius	20%/50%/75%/100%(1-8m)
Mounting Height	Max 20ft.(6meters)
Time Setting	5S/1min/3min/5min/15min/10min/30min
Daylight	5Lux/15Lux/30Lux/50Lux/100Lux/150Lux/Disable
Temperature	-23°F - +140°F (-25°C~+60°C)
IP Rating	IP20

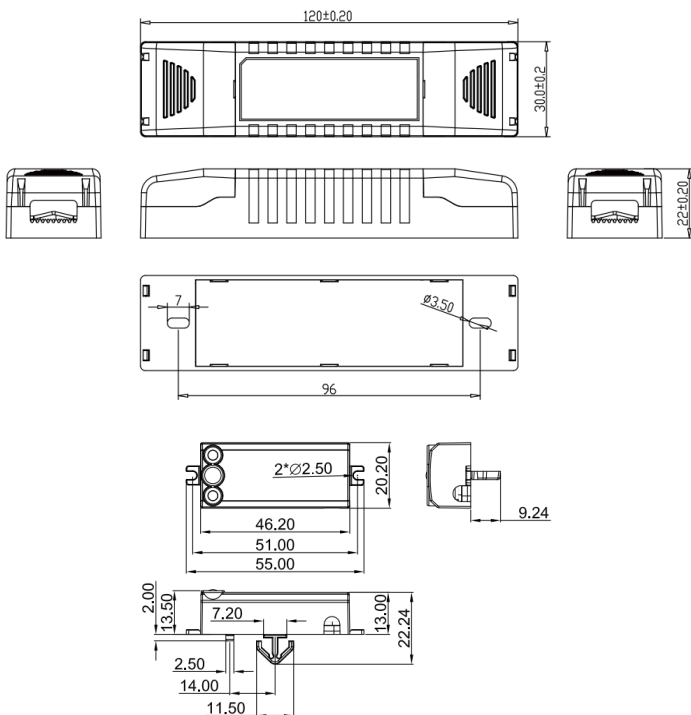
SENSOR COVERAGE



PHYSICAL PARAMETERS

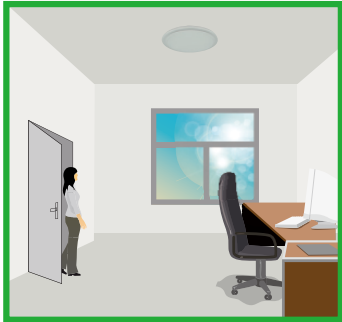
DIMENSION

Unit: mm



Corridor Function

This function inside the motion sensor to achieve tri-level control, for some areas which require a light change notice before switch-off. The sensor offers 3 levels of light: 100%-->dimmed light (natural light is insufficient) -->off; and 2 periods of selectable waiting time: motion hold-time and stand-by period; Selectable daylight threshold and freedom of detection area.



With sufficient natural light, the light does not switch on when presence is detected. (If daylight disable, the sensor will switch on the light when presence is detected)



With insufficient natural light, the sensor switches on the light automatically when presence is detected



After hold-time, the light dims to stand-by level as preset dimming level.



Light switches off automatically after the stand-by period elapses. (The light will keep stand-by level if preset the stand-by period is ∞)

Wiring Diagrams

