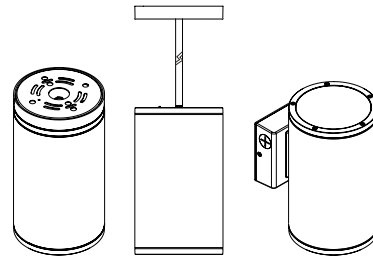


Installation Instructions

LED CYLINDER LIGHT

CLD, CLD-WM Series



WARNING Risk of Fire and Electric Shock.

The luminaire must be installed by a qualified electrician in accordance with applicable federal, state, and local laws and codes. Installation requires knowledge of luminaire electrical systems and installer should be familiar with the operation of this product. If not qualified, do not attempt installation; contact a qualified electrician. Manufacturer assumes no responsibility for the improper installation of this luminaire. When installing the fixture, drilling may damage luminaire wiring and electrical parts. Check for wiring and components in enclosure before drilling. Turn OFF power before installation or attempting any maintenance.

To prevent wiring damage or abrasion, do not expose wiring to edges of sheet metal or other sharp objects. When installing this kit, drilling may damage luminaire wiring and electrical parts. Check for wiring and components in enclosure before drilling.



WARNING Risk of Burn.

Disconnect power and allow fixture to cool before handling or servicing.



WARNING Risk of Personal Injury.

Wear gloves or proper handling protection to prevent cuts or abrasions when handling and maintaining this product. This equipment may have sharp edges. To reduce the risk of death, personal injury or property damage from fire, electric shock, falling parts, cuts/abrasions, and other hazards read all warning and instructions included with and on the fixture box and all fixture labels. Avoid direct eye exposure to the light source while it is on.

NOTICE

- Green ground screw provided in proper location. Do not relocate.
- Minimum 90°C supply conductors.
- Suitable for Dry or Damp locations for CLD, wet location for CLD-WM.
- Specifications and dimensions subject to change without notice.



Contact manufacturer with any questions or concerns regarding installation of this luminaire.

Alphalite

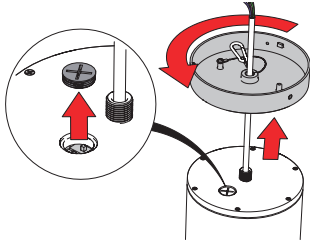
Installation Instructions

LED Cylinder Light

A: Adjusting CCT and Wattage.

a) For Ceiling mount and Pendant mount.

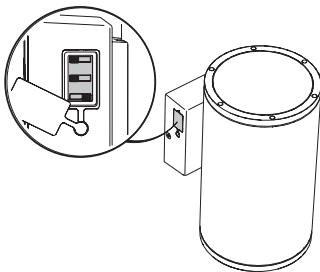
1. Unscrew the base and remove the revealed conduit plug to access the controller. And move the DIP switches to the desired settings.



2. Replace the conduit plug.
3. Screw the base securely to the fixture. (Pendant mount only)

b) For wall mount.

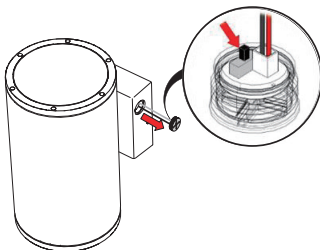
1. Remove the rubber cover to access the controller. And move the DIP switches to the desired settings.



2. Replace the rubber cover securely to avoid water penetration into the fixture.

B: Accessing the Photoelectric Switch (For wall mount only)

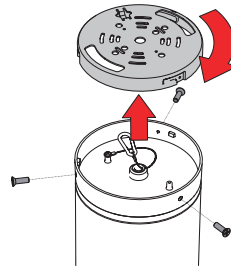
1. Unscrew the clear conduit plug with the photoelectric switch attached. Adjust the switch on the back side to enable or disable (ON/OFF) the photocell.



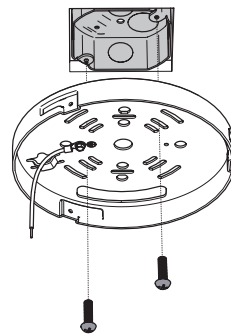
2. Replace the conduit plug securely to avoid water penetration into the fixture.

C: Ceiling Mount

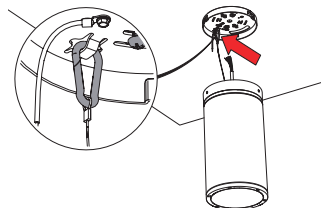
1. Remove the screws from the fixture base, twist the quick mount plate clockwise and separate it from the fixture base.



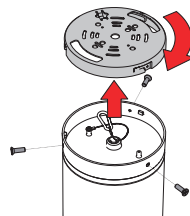
2. Install the quick mount plate on the junction box.



3. Hook the carabiner to the quick mount plate to support the fixture and follow the Wiring Diagram to connect the fixture leads to the supply leads. If dimming is not required, make sure to cap off the dimming wires. Tuck any extra length of wire into the junction box.



4. Align the inner tabs of the base with the notches in the quick mount plate and twist the fixture onto the quick mount plate. Secure the fixture with the screws removed in Step 1.



5. Restore power and check that the fixture is working properly.

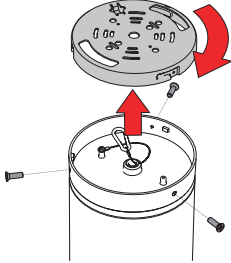
Alphalite

Installation Instructions

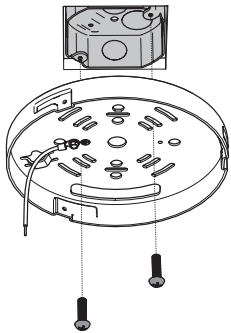
LED Cylinder Light

D: Pendant mount

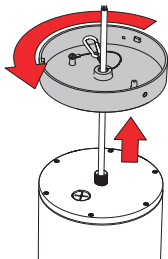
1. Remove the screws from the fixture base, twist the quick mount plate clockwise and separate it from the fixture base.



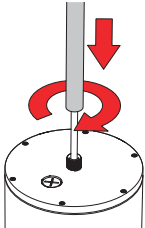
2. Install the quick mount plate on the junction box.



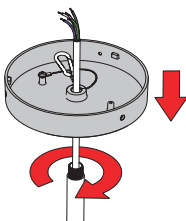
3. Unscrew the base and separate it from the fixture.



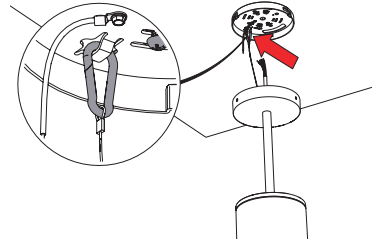
4. Pass the fixture's cord through the pendant stem and screw the stem onto the exposed threading on top of the fixture. Add an additional stem if required by screwing it into the previously installed stem.



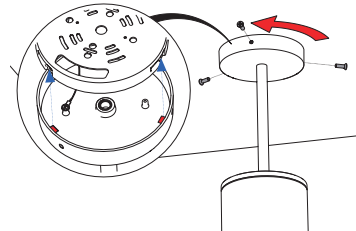
5. Pass the fixture's cord through the bottom of the base and screw the base onto the pendant stem.



6. Hook the carabiner to the quick mount plate to support the fixture and follow the Wiring Diagram to connect the fixture leads to the supply leads. If dimming is not required, make sure to cap off the dimming wires. Tuck any extra length of wire into the junction box.



7. Align the inner tabs of the base with the notches in the quick mount plate and twist the fixture onto the quick mount plate. Secure the fixture with the screws removed in Step 1.



8. Restore power and check that the fixture is working properly.

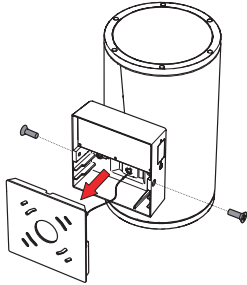
Alphalite

Installation Instructions

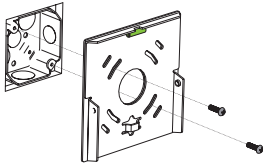
LED Cylinder Light

E: Wall mount

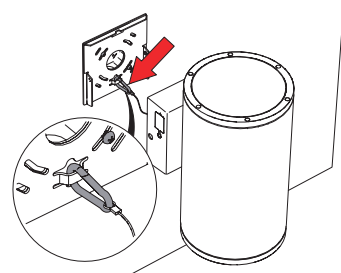
1. Remove the screws from the fixture mount and remove the quick mount plate.



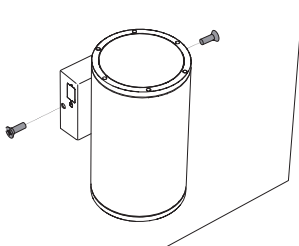
2. Install the quick mount plate on the junction box, using the bubble leveler to align it properly.



3. Hook the carabiner to the quick mount plate and follow the Wiring Diagram to connect the fixture leads to the supply leads. If dimming is not required, make sure to cap off the dimming wires. Tuck any extra length of wire into the junction box.



4. Secure the fixture mount to the quick mount plate using the screws removed in Step 1. Do not pinch any wires.



5. Restore power and check that the fixture is working properly.

Wiring Diagram:



Alphalite