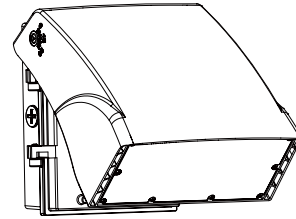


Installation Instructions

LED SLIM WALL PACK

WPS



WARNING Risk of Fire and Electric Shock.

The luminaire must be installed by a qualified electrician in accordance with applicable federal, state, and local laws and codes. Installation requires knowledge of luminaire electrical systems and installer should be familiar with the operation of this product. If not qualified, do not attempt installation; contact a qualified electrician. Manufacturer assumes no responsibility for the improper installation of this luminaire. When installing the fixture, drilling may damage luminaire wiring and electrical parts. Check for wiring and components in enclosure before drilling. Turn OFF power before installation or attempting any maintenance.

To prevent wiring damage or abrasion, do not expose wiring to edges of sheet metal or other sharp objects. When installing this kit, drilling may damage luminaire wiring and electrical parts. Check for wiring and components in enclosure before drilling.



WARNING Risk of Burn.

Disconnect power and allow fixture to cool before handling or servicing.



WARNING Risk of Personal Injury.

Wear gloves or proper handling protection to prevent cuts or abrasions when handling and maintaining this product. This equipment may have sharp edges. To reduce the risk of death, personal injury or property damage from fire, electric shock, falling parts, cuts/abrasions, and other hazards read all warning and instructions included with and on the fixture box and all fixture labels. Avoid direct eye exposure to the light source while it is on.

NOTICE

- Green ground screw provided in proper location. Do not relocate.
- Minimum 90°C supply conductors.
- Suitable for wet location.
- Specifications and dimensions subject to change without notice.



Contact manufacturer with any questions or concerns regarding installation of this luminaire.

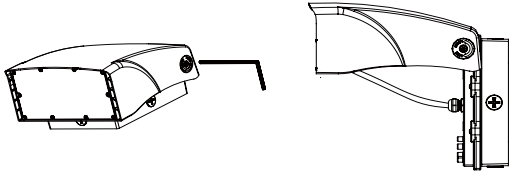
Alphalite

Installation Instructions

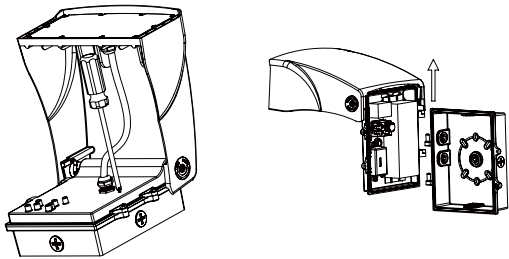
LED SLIM WALL PACK

Wall mount installation

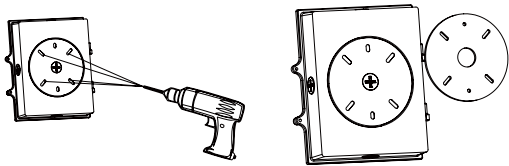
1. Loosen the screws on the side of the radiator with an Allen wrench, and rotate the radiator to 90 degrees.



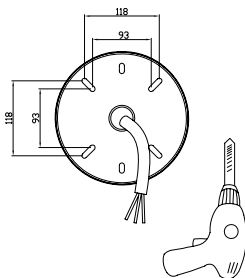
2. Use a screwdriver to remove the screws on the driver box cover and separate the driver box from the radiator.



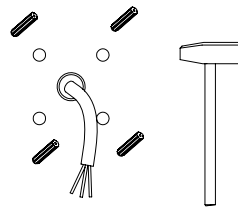
3. Drill an installation holes at the bottom of light, paste the EVA mat.



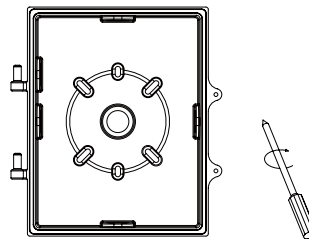
4. Drill holes on the wall according to the locating plate.



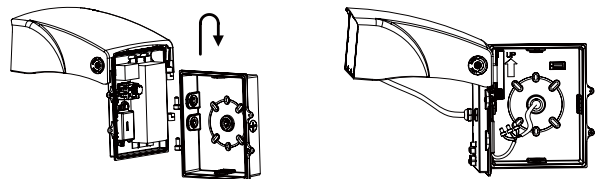
5. Remove the screws from the fixture base, twist the quick mount plate clockwise and separate it from the fixture base.



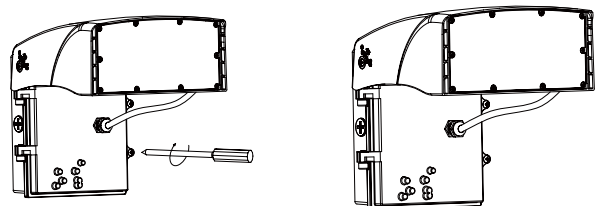
6. Align the holes on the lamp base with the holes on the wall, and tighten the screws.



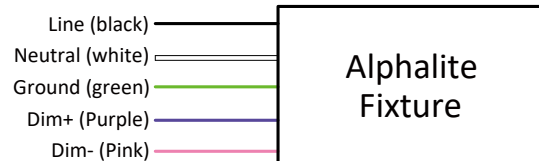
7. Fasten the radiator to the driver box and connect the wires properly.



8. Well organize the line and tighten the screws of the lamp base.



Wiring Diagram:



Alphalite