

Installation Instructions

LED Wall pack

WPTA-P5 Series



WARNING Risk of Fire and Electric Shock.

The luminaire must be installed by a qualified electrician in accordance with applicable federal, state, and local laws and codes. Installation requires knowledge of luminaire electrical systems and installer should be familiar with the operation of this product. If not qualified, do not attempt installation; contact a qualified electrician. Manufacturer assumes no responsibility for the improper installation of this luminaire. When installing the fixture, drilling may damage luminaire wiring and electrical parts. Check for wiring and components in enclosure before drilling. Turn OFF power before installation or attempting any maintenance.

To prevent wiring damage or abrasion, do not expose wiring to edges of sheet metal or other sharp objects. When installing this kit, drilling may damage luminaire wiring and electrical parts. Check for wiring and components in enclosure before drilling.



WARNING Risk of Burn.

Disconnect power and allow fixture to cool before handling or servicing.



WARNING Risk of Personal Injury.

Wear gloves or proper handling protection to prevent cuts or abrasions when handling and maintaining this product. This equipment may have sharp edges. To reduce the risk of death, personal injury or property damage from fire, electric shock, falling parts, cuts/abrasions, and other hazards read all warning and instructions included with and on the fixture box and all fixture labels. Avoid direct eye exposure to the light source while it is on.

NOTICE

- Green ground screw provided in proper location. Do not relocate.
- Minimum 90°C supply conductors.
- Suitable for wet location.
- Specifications and dimensions subject to change without notice.

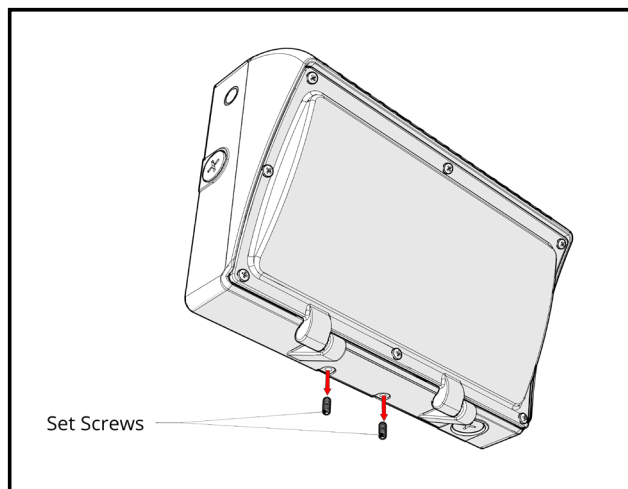


Contact manufacturer with any questions or concerns regarding installation of this luminaire.

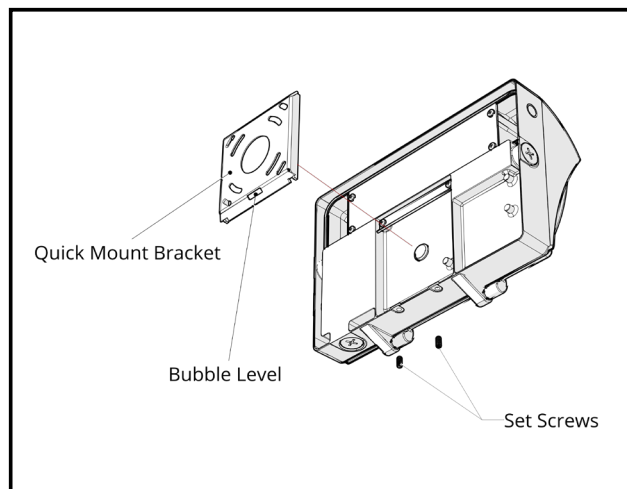
Alphalite

Installation Instructions

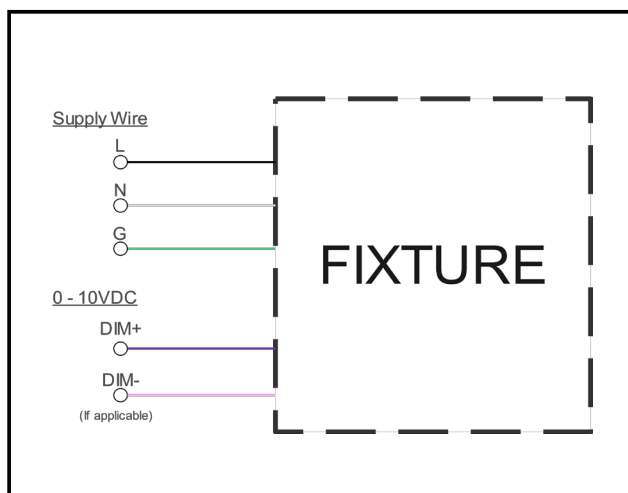
LED wall pack



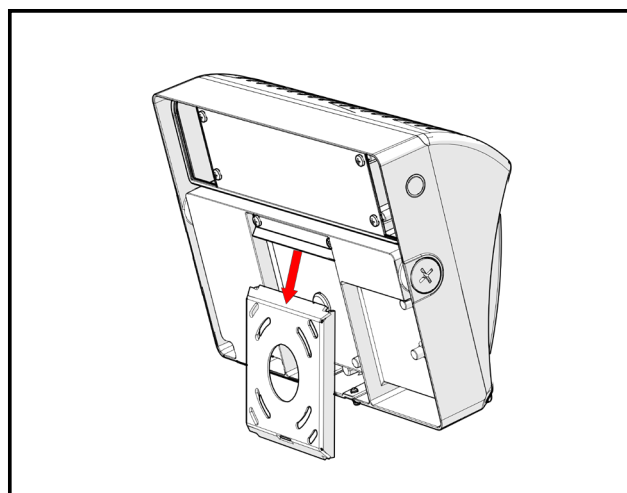
Step 1: Loosen the two (2) set screws found on the bottom of the fixture housing.



Step 2: Remove the quick mount bracket from the fixture and attach it to the junction box with the appropriate hardware (not included).



Step 3: Make the wiring connections according to the wiring diagrams on Page 4. Push excess wire into the junction box.

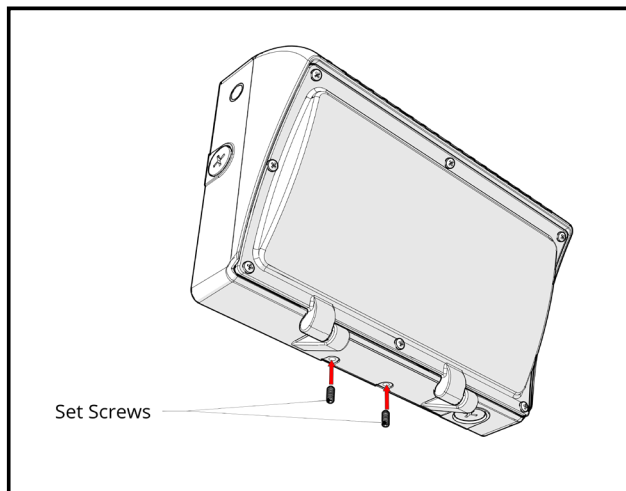


Step 4: Lift the fixture and tilt slightly toward the quick mount bracket. Hook the fixture housing onto the quick mount bracket as shown. Take care not to pinch any wires.

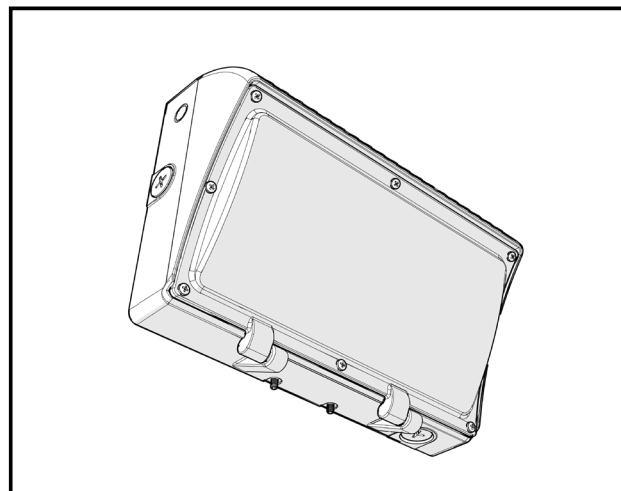
Alphalite

Installation Instructions

LED wall pack



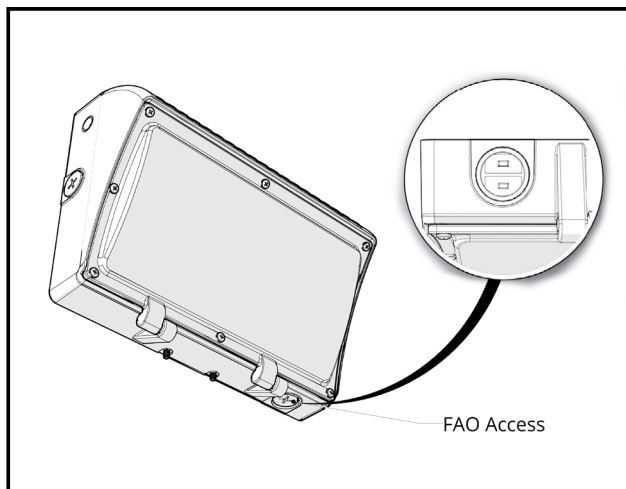
Step 5: Tighten the two (2) set screws to secure the fixture housing to the quick mount bracket.



Step 6: Restore power and check that the fixture is functioning properly.

IMPORTANT: Apply silicone sealant around the perimeter of the fixture housing where it meets the mounting surface in order to prevent water ingress.

Wattage/CCT Adjustment (optional)



Step 1: With the supply power off, open the bottom conduit plug. Adjust the controller to the desired wattage and CCT by sliding the switches on the controller. Replace the conduit plug and tighten it.

Alphalite