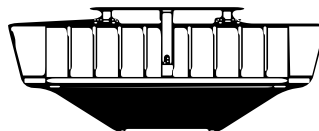


# Installation Instructions

## LED CANOPY LIGHT

### CNP Series



#### WARNING Risk of Fire and Electric Shock.

The luminaire must be installed by a qualified electrician in accordance with applicable federal, state, and local laws and codes. Installation requires knowledge of luminaire electrical systems and installer should be familiar with the operation of this product. If not qualified, do not attempt installation; contact a qualified electrician. Manufacturer assumes no responsibility for the improper installation of this luminaire. When installing the fixture, drilling may damage luminaire wiring and electrical parts. Check for wiring and components in enclosure before drilling. Turn OFF power before installation or attempting any maintenance.

To prevent wiring damage or abrasion, do not expose wiring to edges of sheet metal or other sharp objects. When installing this kit, drilling may damage luminaire wiring and electrical parts. Check for wiring and components in enclosure before drilling.



#### WARNING Risk of Burn.

Disconnect power and allow fixture to cool before handling or servicing.



#### WARNING Risk of Personal Injury.

Wear gloves or proper handling protection to prevent cuts or abrasions when handling and maintaining this product. This equipment may have sharp edges. To reduce the risk of death, personal injury or property damage from fire, electric shock, falling parts, cuts/abrasions, and other hazards read all warning and instructions included with and on the fixture box and all fixture labels. Avoid direct eye exposure to the light source while it is on.

#### NOTICE

- Green ground screw provided in proper location. Do not relocate.
- Minimum 90°C supply conductors.
- Suitable for wet location.
- Specifications and dimensions subject to change without notice.



Contact manufacturer with any questions or concerns regarding installation of this luminaire.

# Alphalite

# Installation Instructions

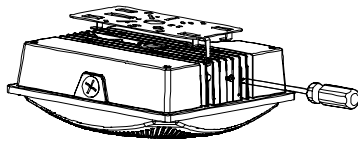
## LED Canopy Light

### A: Adjusting CCT and Wattage.

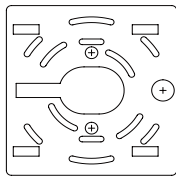
1. Unscrew and remove the back cover, and move the DIP switches to the desired settings.
2. Replace the back cover.
3. Screw the back cover securely to the fixture.

### B: Mounting with quick mount plate

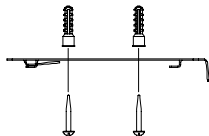
1. Remove the quick mount plate from the top of the LED fixture.



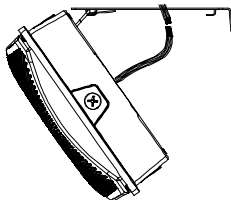
2. Drill holes into the ceiling according to the quick mount plate, or align with holes in junction box.



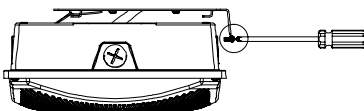
3. Drill rubber plugs into the ceiling, then secure the quick mount plate to the ceiling or junction box.



4. Hang the fixture from the plate, then connect fixture wiring to local power supply according to the wiring diagram using necessary wiring protection.

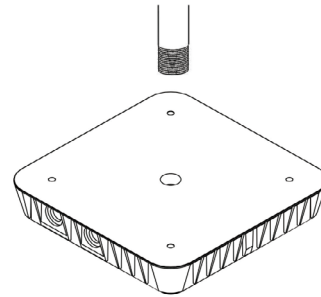


5. Secure the fixture to the plate, then fasten the screws on sides of fixture. Turn on power when ready.

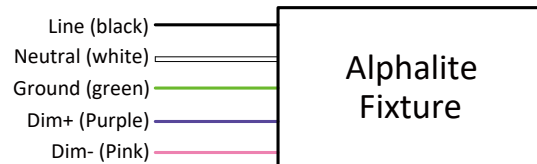


### C: Mounting with Pendant stem

1. Remove the wire plug from top of fixture to exposed the NPS thread.
2. Feed housing wires through pendant stem (not provided).
3. connect fixture wiring to local power supply according to the wiring diagram using necessary wiring protection.
4. Thread penant pipe to top of housing. Be sure to wrap peflon tape or siliconeb to thread of pipe to prevent moisture from entering.



### Wiring Diagram:



# Alphalite